



PIPE TOOLS & VISES
SINCE 1896



Cutters & Cutter Wheels

Deburring Tool - Inner / Outer..... 2a

Plastic Pipe Tools

DEB1 Series Deburring Tools - Drill-Powered 2a

Clean Ream Extreme™
Toilet Closet Flange Reamer 3a

Clean Ream Plus™
Plastic Pipe Fitting Reamers..... 3a

Ratchet Shears..... 3a

Cone Chamfer Tool 4a

Cordless Power Pipe Beveler..... 4a

Water Services Tools & Machines

Tapping Compound..... 5a

Pivot Head Valve & Curb Keys..... 5a

Corporation Stop Key Sockets..... 6a

Valve Operators 6a

Vises

Mid-Line Vise..... 7a

Wrenches

Aluminum Strap Wrenches 7a

2017

NEW TOOLS

Quality. Service. Performance.

www.reedmfgco.com

CUTTERS & CUTTER WHEELS

DEBURRING TOOL INNER / OUTER



FEATURES

- Deburr inner and outer diameters with one tool.
- Knurled hand grip keeps tool secure in operator's hand.
- Used for water service lines, copper pipe installations, plumbing lines, radiant heating and gas lines.

Reed's Inner/Outer Deburring Tool, **DEB200**, deburrs and reams both the inner and outer diameters using one tool. This double-ended deburring tool works for copper, aluminum, steel and stainless tubing. Multiple cutting edges on the inside of either end provide smooth deburring operation. Knurled rings on the surface allow operator a firm grip during use. The tool is used for copper pipe installation, plus with metal pipe found in water service lines, plumbing lines, radiant heating and gas lines.

CATALOG NO.	ITEM CODE	CAPACITY		APPLICATION	WEIGHT	
		in	mm		lbs	kg
DEB200	04431	3/8" - 2 CTS I.D./O.D. 3/8" - 1 1/2 IPS I.D./O.D.	10 - 54 I.D./O.D.	Copper, Aluminum, Steel, Stainless Steel	1.1	0.5

+ MORE Metal
Deburring Tools on
P. 13 of Reed's catalog.

PLASTIC PIPE TOOLS

DEB1 SERIES DEBURRING TOOLS DRILL-POWERED



FEATURES

- Integrated shaft for drill power operation.
- Knurled grip for slip-resistance and durable aluminum body for longevity.
- Deburr and chamfer in the same rotation.
- Three sizes of pipe accommodated per tool.

Reed's popular DEB1 Series deburring tools are offered with an integral shaft to allow the operator to use with a drill. Make short work of deburring jobs, especially when working on multiple lengths of pipe. Patented DEB1 tools deburr and chamfer to pipe manufacturers' recommendations in seconds. Plastic pipe joints get proper fit from smooth, chamfered ends delivered by DEB1 models. Use for PVC, CPVC, ABS, PE and PP pipe. Find three sizes in one tool. All DEB1 models have internal pipe guides, knurled grip for slip-resistance and a sharpenable and/or replaceable blade.

CATALOG NO.	ITEM CODE	NOMINAL PIPE CAPACITY	APPLICATION	PIPE/TUBING	WEIGHT	
					lbs	kg
PDEB1IPS	04651	1/2", 3/4", 1" O.D.	PVC, CPVC, PE, ABS, PP	IPS	0.6	0.3
PDEB1-2IPS	04657	1/4", 1/2", 2" O.D.	PVC, CPVC, PE, ABS, PP	IPS	1.0	0.4

+ MORE Plastic Pipe
Deburring Tools on P. 29
of Reed's catalog.

**ONLINE VIDEO
TRAINING**

videos.reedmfgo.com/deburring



PIPE TOOLS & VISES
SINCE 1896

CLEAN REAM EXTREME™ TOILET CLOSET FLANGE REAMER

FEATURES

- Removes toilet flange from inside 4" Schedule 40 PVC pipe.
- Eliminate the hassle and labor time of sawing and chiseling out the old closet flange.
- Fits into standard ½" drills.

Reed's Toilet Closet Flange Reamer removes the toilet flange and saves the sewer pipe for reuse. Clean out the old, damaged closet flange, install a new one and complete the project in minutes. Engineered to fit 4" internal flange, the toilet closet flange reamer saves time and material costs for the plumbing project. Built to the same standards as Reed's other Clean Ream Extreme™ reamers, this new application meets the specific clean-out need for internal flange to sewer drain connection.

CATALOG NO.	ITEM CODE	DESCRIPTION	SHAFT SIZE	WEIGHT	
				lbs	kg
TFR400	04564	Removes 4" Internal Toilet Closet Flange on 4" Sch. 40 PVC	¾" Hex	1.4	0.6



TFR400

CLEAN REAM PLUS™ PLASTIC PIPE FITTING REAMERS

FEATURES

- Reliable Clean Ream Plus is engineered for 250 or more reams - far more than the competition.
- Mid-priced model gives exceptional service which means less downtime.
- Save time and materials by eliminating the need to replace entire sections of pipe.
- Designed to ream-out Schedule 40 PVC, CPVC & ABS fittings.
- Heat-treated for long life, the cutting disc may be sharpened and/or replaced.

Clean Ream Plus™ Plastic Pipe Fitting Reamers are inserted into a drill (not provided) to clean out the old or broken pipe and leftover solvent cement from a fitting so the fitting can be reused. Reed's Clean Ream Plus line offers durable, price competitive tools. These are used for reaming drain and waste piping, vent intake, as well as plumbing fittings. Units feature a red, anodized aluminum guide and black cutting disc. The disc is heat-treated for long life and is sharpenable and/or replaceable.

NOTE: Not recommended for pressurized systems.

CATALOG NO.	ITEM CODE	DESCRIPTION	SHAFT SIZE	WEIGHT	
				lbs	kg
CRP150	04517	Reams 1 ½" Sch. 40 PVC, CPVC & ABS Fittings	¾" Hex	0.3	0.1
CRP200	04518	Reams 2" Sch. 40 PVC, CPVC & ABS Fittings	¾" Hex	0.4	0.18



videos.reedmfgco.com/cleanream



CRP150

CRP200

✓ WHY REED?

Mid-price solution for a durable tool that respectfully cleans out plastic pipe fittings.

+ MORE Plastic Pipe Fitting Reamers on P. 27 of Reed's catalog.

RATCHET SHEARS

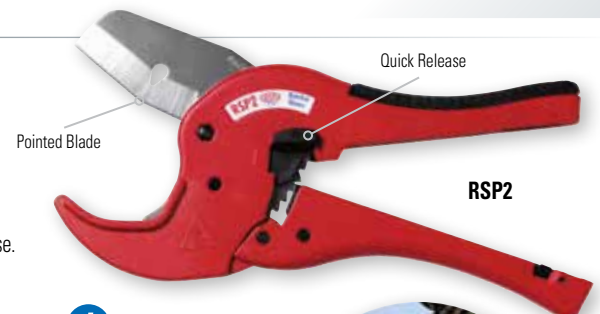
FEATURES

- Pointed blade in one-hand, ratcheting RSP2 helps start the cut in tough plastics and helps avoid bounce in thin wall material.
- V-shaped cradle supports pipe giving 3 touch points - 2 at bottom and main one on blade.
- Hardened steel blade makes RSP2 ideal for cutting PE, PP, PEX and ABS.
- Quick release lever to open blade, along with safety latch to keep tool closed when not in use.
- Sharpen or replace blade for best performance.

Ratchet shears with hardened steel blades are ideal for cutting PE, PP, PEX and ABS pipe. Pointed blade in one-hand model RSP2 helps start the cut in tough plastics and helps avoid bounce in thin wall material.

NOTE: Not recommended to cut PVC or CPVC for solvent cement weld connections. Instead use Reed Quick Release™ Tubing Cutters.

CATALOG NO.	ITEM CODE	CAPACITY		LENGTH		WEIGHT	
		actual O.D. in	actual O.D. mm	in	mm	lbs	kg
RSP2	04277	2" nom. IPS (2.5" actual O.D.)	63	11.5	292	1.56	0.7



Pointed Blade

Quick Release

RSP2

+ MORE Ratchet Shears on P. 26 of Reed's catalog.



CONE CHAMFER TOOL DRILL-POWERED OR MANUAL



FEATURES

- Chamfer pipe and have it ready for glue in seconds.
- Cone shape chamfers full range of 3/4" - 2 1/2" nominal plastic pipe sizes.
- Power or manual operation possible due to removeable shaft.
- Works great for PE water service lines.

Cone Chamfer Tool efficiently chamfers the inside or outside diameter of multiple pipe sizes, including metric pipe sizes, with one tool. Chamfer pipe and be ready for glue in seconds. Generally used with a drill, the removable 3/8" hex shaft also permits manual operation. The cone chamfer tool is designed for PE, PVC, CPVC, PEX, ABS and PP pipe. The tool's hardened steel blade is sharp and durable, providing a fast chamfer result in seconds, with smooth edges. For best results, replace blade as needed.

CATALOG NO.	ITEM CODE	CAPACITY		WEIGHT	
		in	mm	lbs	kg
PDEB250	04438	3/4 - 2 1/2	40 - 75	0.2	0.1

REPLACEMENT BLADES

CATALOG NO.	ITEM CODE	DESCRIPTION
PDEB250B	94440	PDEB250 Blades, 2/pk.

CORDLESS POWER PIPE BEVELER

FEATURES

- Cordless power tool deburrs and bevels plastic pipe **quickly**.
- Adjustable CPB beveler creates 15° external bevel, up to 5/8" long on plastic pipe.
- **Long-lasting** carbide router bit with four flutes and high RPMs for fast, smooth cuts.
- Ideal for **large diameter** plastic pipe.
- Optional accessory beveler shroud CPBIDS rapidly bevels 2" and larger internal diameters.

Reed's Cordless Power Pipe Beveler quickly and easily deburrs and bevels plastic pipe of 2" and larger diameter. This lightweight tool creates fast, smooth cuts in the field with ease. Extremely useful on most PVC glued joints and some sizes of bell and gasket joints. Easily adjustable for bevel length, **RBIT1** router bit evenly cuts a 15° external bevel up to 5/8" long. Or use the optional **RBIT2** router bit to create 12° bevels up to 1" long. Always defer to pipe manufacturer specifications for bevel recommendations.

For internal bevels on plastic conduit of 2" or more, electrical and utility contractors appreciate the ability to make pipe interiors snag-free. The **CPBKIT** is a complete kit for ID beveling. The **CPBKIT** can be converted to an internal beveler with the optional ID Beveler Shroud (**CPBIDS**).

The Cordless Power Beveler Kit (**CPBKIT**) consists of the beveler attachment powered by a 22,000 RPM, 18V cordless die grinder with a 4 Amp Lithium-ion battery. The grinder has more than sufficient RPMs to provide smooth cuts. The included **RBIT1** cutting tool is a four flute, carbide router bit which delivers consistent, quick cuts.

CATALOG NO.	ITEM CODE	DESCRIPTION	BEVEL LENGTH*	CAPACITY		GROSS WEIGHT	
				in-nom	mm	lbs	kg
CPBKIT	04640	Kit with CPB Beveler Attachment, RBIT1 Router Bit, Bosch® Die Grinder, Battery & Charger, 120 V, 60 Hz	Adjustable 1/8" - 5/8"	2" and up	50	11.9	5.4
CPBEKIT	04642	Kit with CPB Beveler Attachment, RBIT1 Router Bit, Bosch® Die Grinder - for export	Adjustable 1/8" - 5/8"	2" and up	50	8.3	3.8
CPBIDKIT	04643	Kit for interior diameter with CPBIDS Shroud, Beveler Attachment, RBIT1 Router Bit, Bosch® Die Grinder, Battery & Charger, 120 V, 60 Hz	Adjustable 1/8" - 5/8"	2" and up	50	11.9	5.4

*Add RBIT2 for bevel length of 7/16" - 1"

NOTE: Battery & Charger Kit: Bosch® SKC181-101 18V Lithium-ion.

ACCESSORIES

CATALOG NO.	ITEM CODE	DESCRIPTION
RBIT1	44644	Carbide Router Bit, 15°
RBIT2	44648	Carbide Router Bit, 12°
CPBIDS	94644	Beveler Shroud for internal bevel on plastic pipe 2" or larger





PIPE TOOLS & VISES
SINCE 1896

WATER SERVICES TOOLS & MACHINES

TAPPING COMPOUND

FEATURES

- Squeeze bottle with flip cap facilitates jobsite use.
- **New formula** as of September 2016.
- **Fully synthetic** formula holds up well under temperature extremes.
- Formula **resists water** washout.

Tapping Compound is a cutting lubricant. Fully synthetic and rated H1 food grade, Reed Tapping Compound is impact resistant and resists water washout. Applied liberally to drill taps, it extends tool life and produces fast, smooth taps. Tapping Compound requires direct hand application by the user.

CATALOG NO.	ITEM CODE	DESCRIPTION
TMTC6	99140	6 oz. (170 g) Squeezable Bottle

TMTC6



✓ WHY REED?
Food-grade compound that **does not** contaminate water, making this compound environmentally friendly.

+ MORE Tapping Tools on P. 39 of Reed's catalog.

PIVOT HEAD VALVE & CURB KEYS

FEATURES

- **Pivoting** head fits difficult-to-reach 2" operating nuts.
- Heavy gauge, mechanical steel tubing shafts **support** a maximum torque of 200 foot-pounds.
- Made in USA, Reed valve keys feature **strong welds** at critical points.
- As a **safety feature**, Reed valve keys bend before they break.
- Use manually with included handle or add Reed's 700PD power drive and clutch for power valve operation.

Reed Valve and Curb Keys are built for strength and durability. All of Reed's key assemblies will support a maximum torque of 200 foot-pounds. Upper shafts are made from heavy-gauge, mechanical steel tubing plus curb key ends are machined from solid steel for strength. As a safety feature, keys bend before breaking to indicate overload. Made in USA, Reed valve and curb keys also feature strong welds at critical points.

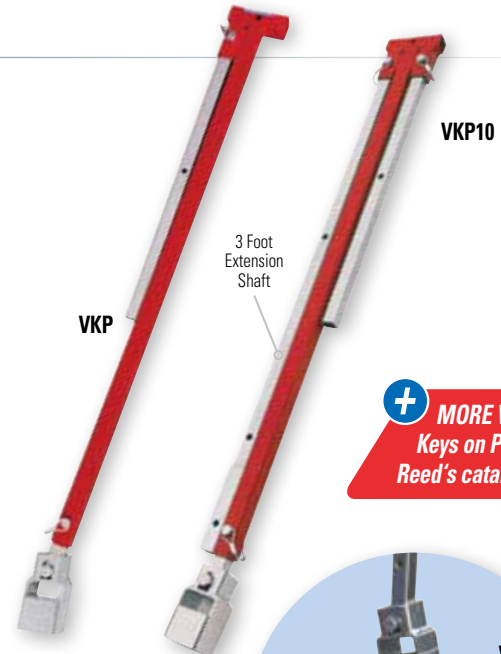
Valve and curb keys have a telescoping design. When telescoped in, they are under 4 feet long and fit easily in small utility trucks, behind pickup seats, and in car trunks. When telescoped out, lengths of 5 feet to 10 feet are possible. **VKP** and **VKP10** feature a pivot head used for leaning or unparallel valves which can occur over time as lines settle.

For greater control and versatility, a variety of tools fit the end of these T handles to turn curb stops. Optional clip-on tools turn small valve wheels and curb box rods. Valve keys may be used manually or with Reed's 700PD power drive and clutch for electric or pneumatic power. With this wide variety, operators choose valve keys according to the needs of their systems.

CATALOG NO.	ITEM CODE	DESCRIPTION	CLOSED LENGTH		OPEN LENGTH		WEIGHT	
			in	mm	in	mm	lbs	kg
VKP	02341	Pivoting Valve Key for 2" Operating Nut, Adjustable Length	46.5	1181	82	2083	16	7.3
VKP10	02345	Pivoting Valve Key with 3-foot Extension for 2" Operating Nut, Adjustable Length	46.5	1181	118	2997	21	9.5
VKP3CK1CK2	02369	Pivoting Valve Key + 1" Curb Key + 2" Curb Key	46.5	1181	82	2083	20.1	9.1
VKPLS	92344	Lower Shaft with Pivot Key Head	-	-	43.5	1105	5.8	2.6

✓ WHY REED?

When it comes to turning gate valves in the street and curb stop valves to buildings, Reed's selection of Valve Keys is the most complete and compact around.



VKP10

+ MORE Valve Keys on P. 48 of Reed's catalog.



VKP in use



VKP Pivot Head



videos.reedmfgco.com/vkeys

CORPORATION STOP KEY SOCKETS



CSK3

Great toolbox addition to aid with corp stop keys.



CSK



L25

FEATURES

- Universal slot fits most standard corp stops and meter keys in the field.
- Corporation Socket for 3/4" – 2" corp stops.
- Attaches to 1/2" drive wrench.
- Use with a wrench extension for deep service boxes.

Reed's Corporation Stop Key Sockets and disc fit most standard corp stops and meter keys in the field. They are a great help for opening and closing the corp stop key. Choose from steel or cast iron construction. Check the slot width for the right size for the job. Use with a ratchet wrench for tight quarters applications.

CATALOG NO.	ITEM CODE	DESCRIPTION	WEIGHT	
			lbs	kg
CSK	02237	Steel, Slot width 0.54"	0.15	0.07
L25	02272	Cast iron, Uses drive wrench or socket wrench, Slot width 0.48"	0.45	0.20
CSK3	02118	Steel, Rotate handle end for three different slots: .450", .390", .312"	0.55	0.30

VALVE OPERATORS

FEATURES

- Digital counter makes the job simpler by tracking turns for the operator.
- Clutch with counter can be retrofit to Reed Valve Operators already in the field.
- Choose from electric or pneumatic power to exercise the valves.

A Valve Operator provides power to make valve turns easy. This portable and economical tool is great for preventive maintenance in valve exercising. Individuals working alone can isolate a leak by shutting multiple valves with this time-saving tool. **VOK700PDCC** uses electricity to drive the clutch whereas pneumatic **VOK700APD** uses compressed air. The **VOKCC** clutch with digital counter applies up to 150 ft-lbs of torque and disengages when torque exceeds preset value. The clutch accepts 1" square shafts. The included Valve Key extends from 4 to 9 feet and recommended operation is at chest height for best leverage.



VOK700PDCC

VOK700PDCC in use



CATALOG NO.	ITEM CODE	DESCRIPTION	GROSS WEIGHT*	
			lbs	kg
VOKCC	05284	Spring-Loaded Valve Key Clutch with Digital Counter	10.5	4.8
VOK700PDCC	05285	Kit includes 700PD electric power drive, VOKCC, 2" valve key, and valve key extension	65.4	29.7
VOK700APDCC	05286	Kit includes 700APD pneumatic power drive, VOKCC clutch, 2" valve key, and valve key extension	80.0	36.4

*GROSS WEIGHT includes all components plus packaging.

+ MORE Valve Operators on P. 49 of Reed's catalog.

VOKCC





PIPE TOOLS & VISES
SINCE 1896

VICES

MID-LINE VISE

FEATURES

- Heavy-duty, cast iron, main body parts.
- Throat depth designed for use with pipe.
- Hardened, reversible, replaceable steel jaws with machined serrations.
- Enclosed, lubricated spindle design.
- 360 degree, slip-proof swivel base with double lockdowns.

Mid-line vises are of strength and price between the Combination Vise and Utility Vise. Design features a machined work surface. The main screw and nut are totally enclosed to keep out dirt and eliminate wear. Straight line pull through the bar and the body greatly reduces wear on main vise nut. Mid-line vises are imported and have replaceable, hardened steel jaw facings and replaceable pipe jaws which are serrated and heat-treated. The base swivels 360° and has two swivel base locking clamps with toothed engagement. Built for a lifetime of service.

CATALOG NO.	ITEM CODE	THROAT DEPTH*		JAW WIDTH		JAWS OPEN ^Ω		PIPE CAPACITY	WEIGHT	
		in	mm	in	mm	in	mm	in-nom.	lbs	kg
708**	01390	4.75	120.7	8	203	8.25	209.6	1/4 - 3 1/2	91.5	41.6

*See illustration

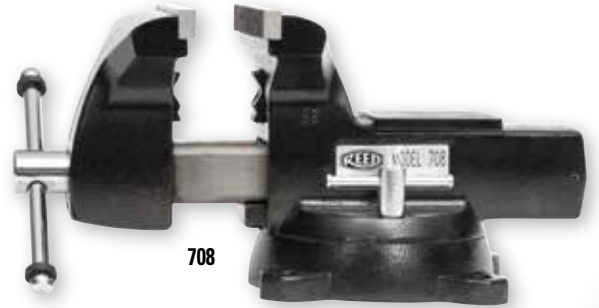
^ΩSee illustration

**3 or more pieces in any combination must ship by truck freight. 

✓ WHY REED?

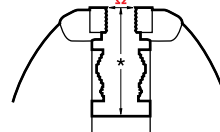
Vises have enclosed screw assembly for all-weather protection.

Swivel-base models feature positive-locking base.



708

Jaws Open



*Throat Depth

+ MORE Vises on P. 65 of Reed's catalog.

WRENCHES

ALUMINUM STRAP WRENCHES

FEATURES

- Aluminum construction for **lighter weight**.
- Some models with longer straps for even **greater capacity**.
- Gripping power without scratching or deforming plastic or polished metal pipe.

Strap wrenches provide gripping power without scratching or deforming plastic or polished metal pipe. Aluminum handle lessens the weight of the wrench. Use on plastic pipe, filters, or any slick or smooth surface. Strap wrenches work well on irregular shapes, too. Reed's coated polyester strap provides slip resistance and durability. **ASW12A30** and **ASW18A48** feature extra-long straps for increased leverage on large diameters.

CATALOG NO.	ITEM CODE	PIPE CAPACITY		TUBE CAPACITY		HANDLE LENGTH		WEIGHT	
		in-nom.	actual O.D. mm	actual O.D. in	actual O.D. mm	in	mm	lbs	kg
ASW12A	02231	1/8 - 2	10 - 63	3 1/2	90	12	305	0.8	0.4
ASW12A30	02232	1/8 - 5	10 - 127	7 1/2	190	12	305	0.9	0.4
ASW18A	02233	1 - 5	33 - 127	6	150	18	458	1.6	0.7
ASW18A48	02234	1 - 12	33 - 305	12	300	18	458	1.7	0.8
ASW24A	02235	2 - 12	60 - 324	14	350	24	610	2.65	1.2

ASW12A



ASW18A



ASW24A



+ MORE Strap Wrenches on P. 70 of Reed's catalog.



Reed Hand Tools are for the professional trade and are warranted against all failure due to defects in workmanship and materials for the normal life of the tool.

FAILURES DUE TO MISUSE, ABUSE, OR NORMAL WEAR AND TEAR ARE NOT COVERED BY THIS WARRANTY.

Power units for Universal Pipe Cutters, Saw It® pneumatic saw, hydrostatic test pumps, cordless power pipe bevelers, and threading power drives are warranted for a period of one year from date of purchase. Hydraulic pumps for PE Squeeze-Off tools have a one year warranty from date of purchase.

No party is authorized to extend any other warranty. No warranty for merchantability or fitness for a particular purpose shall apply.

No warranty claims will be allowed unless the product in question is received freight prepaid at the Reed factory. All warranty claims are limited to repair or replacement, at the option of the company, at no charge to the customer. Reed is not liable for any damage of any sort, including incidental and consequential damages. Some states do not allow the exclusion or limitation of incidental or consequential damages, so the above exclusion may not apply.

This warranty gives you specific legal rights, and you may also have other rights which vary from state to state.



**PIPE TOOLS & VISES
SINCE 1896**

***WE ARE DEDICATED TO EARNING &
KEEPING YOUR BUSINESS.***

Phone
800.666.3691 (US/Canada)
or **814.452.3691**
7:30 am - 5:30 pm Eastern Time

Fax
800.456.1697 (US/Canada)
or **814.455.1697**

Email
reedsales@reedmfgco.com

Shipping Address
1425 West 8th Street
Erie, Pennsylvania 16502 USA

Mailing Address
P.O. Box 1321
Erie, Pennsylvania 16512 USA

www.reedmfgco.com